



**SCHOKBETON**

# Prefabricated concrete by **SCHOKBETON**

## increases the value of your projects.

Ideal for the construction of office buildings, factories, warehouses, schools, hospitals, retirement homes and all other architectural applications requiring top quality construction.



The vast range of **SCHOKBETON**'s architectural panels promotes harmony between aesthetics and structural stability.

Besides offering a most pleasant appearance, the **SCHOKBETON** system of architectural panels contributes to a long life span for your projects. Precast concrete manufactured in a plant under factory-controlled conditions, ensures a uniform, high quality building facade in the desired shapes, colors and textures.



Maintenance costs are thereby kept to a minimum. Whether the project calls for architectural panels, insulating panels, beam panels or supporting panels, the requirements and applications may vary, but the first-rate quality of **SCHOKBETON**'s products remains constant.

Our team of installation experts assures you of close support on the construction site according to the highest industry standards. Deadlines are fully respected.

Being durable, fire and weather resistant, prefabricated concrete reduces costs while guaranteeing an attractive finish.





**Factory prefabrication and element standardization offer many advantages :**

- Freedom of conception
- Quick installation
- Plasticity
- Low maintenance
- Thermal efficiency
- Structural possibilities
- Quality control
- Durability
- Fire-resistance
- Soundproofing

**SCHOKBETON** offers its clients the necessary technical support in planning and design, accurate and reliable estimates, quality manufacture, on-time delivery, plus the service of specialists in installation and finishing, so as to ensure the success of any construction project.



**THE OPTIMAL SOLUTION  
FOR ALL YOUR PROJECTS**



1-800-871-6831

(450) 473-6831

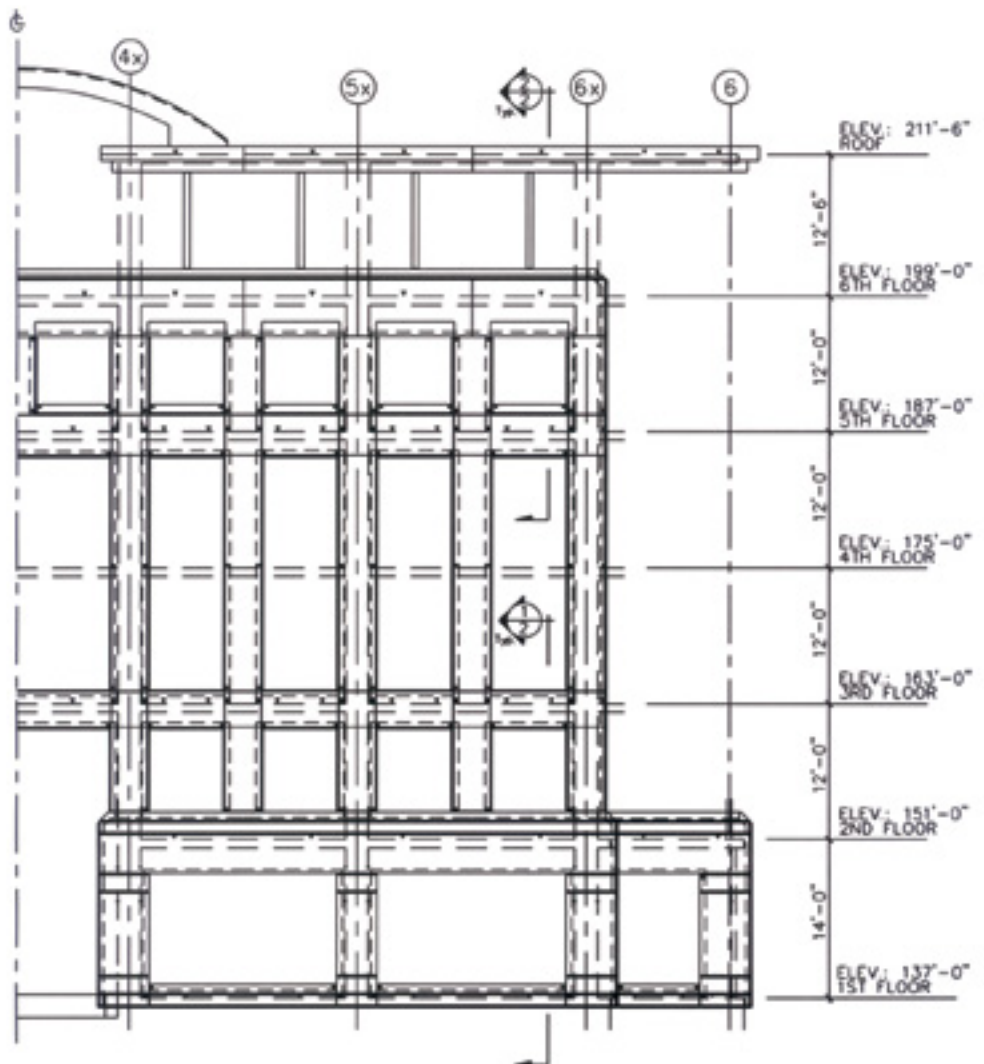
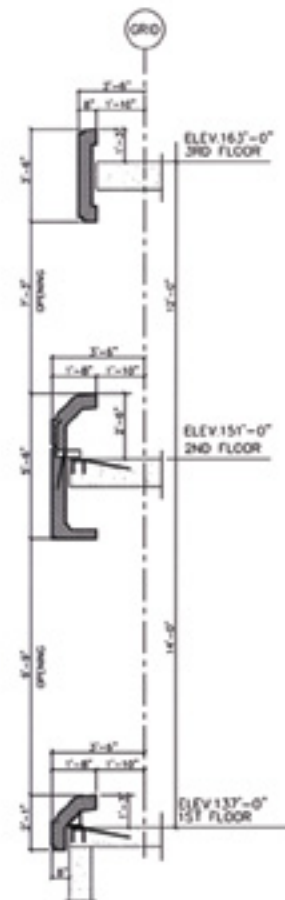
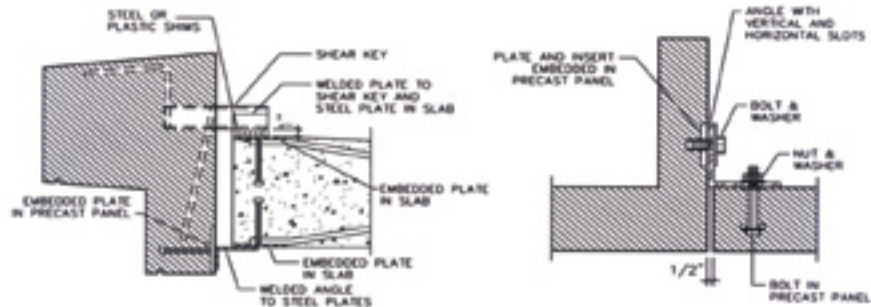
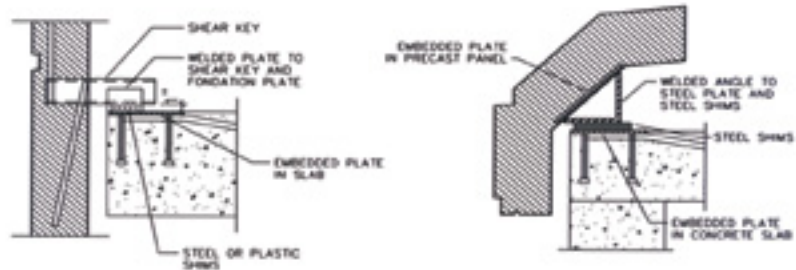
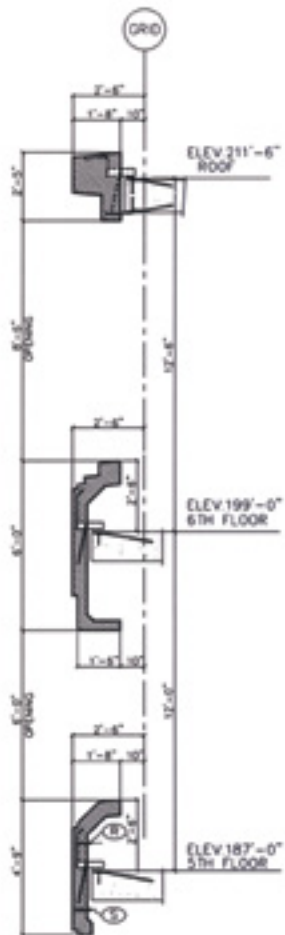
Fax. (450) 473-2285

info@schokbeton.com

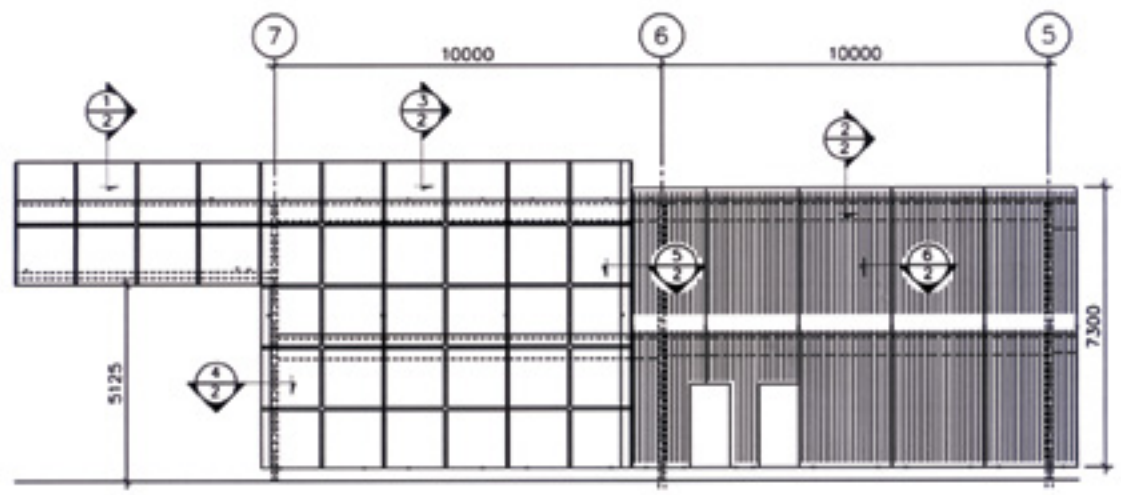
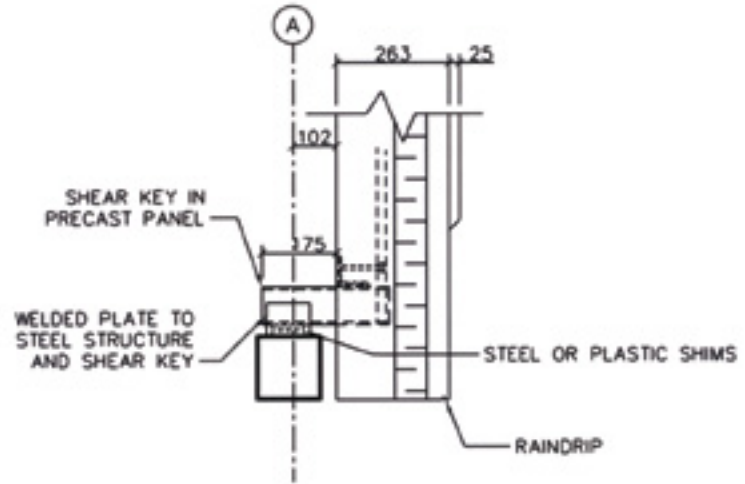
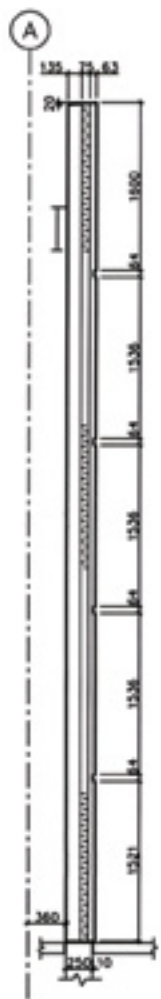
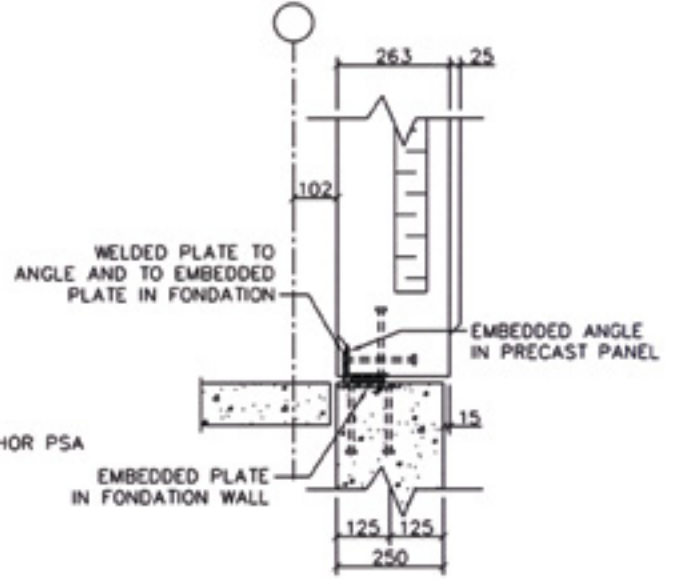
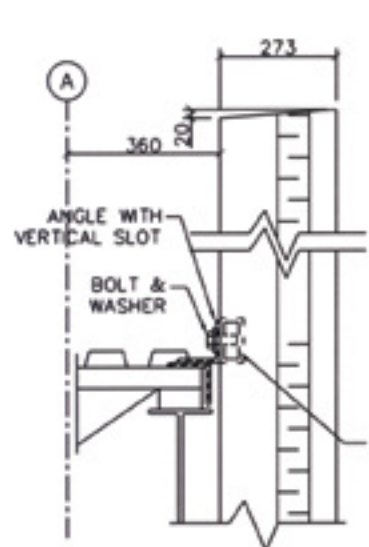
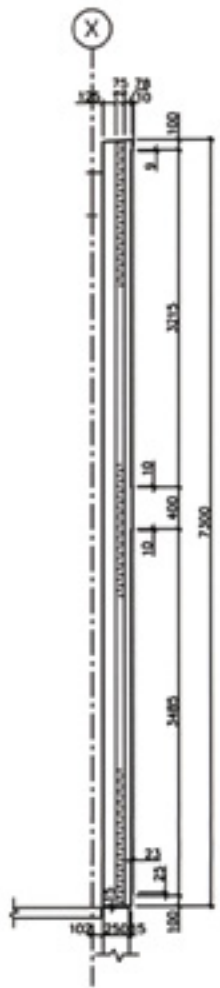
www.schokbeton.com




**CONNECTIONS AND TYPICAL DETAILS**



**CONNECTIONS AND TYPICAL DETAILS**





[www.schokbeton.com](http://www.schokbeton.com)

